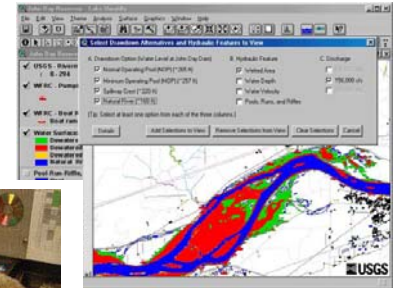


[www.his.se/is513g](http://www.his.se/is513g)

Course code: IS513G  
Course coordinator: Maria Nilsson  
[maria.nilsson@his.se](mailto:maria.nilsson@his.se)



## Decision Support: A User-Centred Perspective

(C-Level)

*This course includes different aspects of human decision-making and different types of decision support systems. Since the course has a user-centred perspective, the relation between the decision-maker, the decision support system, and its use is given extra attention.*

### Course content

5 lectures, 5 seminars (student presentations), 1 group assignment, 1 final home examination

### Examination

The course is graded Fail (U), Pass (G) or Pass with Distinction (VG).

Home examination 2.5 hp/ECTS	U/G/VG
Assignment 2.5 hp/ECTS	U/G/VG
Seminar assignments 2.5 hp/ECTS	U/G

To be graded Pass with Distinction (VG) on the course, both home examination and assignment should be graded Pass with Distinction (VG)

After the course, you will be able to:

- Describe what a user-centred perspective on decision support systems means
- Describe different essential characteristics of human decision-making
- Apply theories of human decision-making on decision support systems, e.g., reflect of the consequences for the user depending on the qualities of the decision support system
- Describe different types of decision support systems and their characteristics, as well as reflect of the ways they support decision-making
- Describe the benefits of decision support systems in organisations and how they can be used
- Report, verbally present, and critically review scientific papers concerning decision-making and decision support systems

### Admission Requirements

Prerequisite course for this course is:

IS123G Information Systems – Usage A (or the equivalent)