

An aerial, dark-themed image of a city at night, likely Gothenburg, Sweden. The city's buildings and streets are visible, overlaid with a complex network of glowing blue lines and dots representing data connections. A prominent digital overlay in the center shows a 'DATABASE CONNECTION ESTABLISHED' message. The overall aesthetic is futuristic and tech-oriented.

DATA – A STRATEGIC RESOURCE IN A SMART CITY

2021-04-29

DAN FOLKESSON, CDO, INTRASERVICE, CITY OF GOTHENBURG

ECOLOGICALLY SUSTAINABLE

City
development &
Environment

Culture and
leisure

Business and
labour

ECONOMICALLY SUSTAINABLE

Gothenburg
Sustainable city –
open to the world

Health and
safety

Democracy and
engagement

Education

SOCIALLY SUSTAINABLE



The City of Gothenburg

Main Presentation

Updated 2020

One city - open to the world



1600 - 1700

In 1621 the city received its city privileges. Built by the Dutch and Germans. Developed to a maritime and trading city, including the East India Company.



1800

The industrial city was developed with expertise from England and Scotland.



1900

The economy is growing with labor from, among others, Italy, Greece, Finland and Yugoslavia.



2000

World renowned international companies, immigrants from all over the world and diversity among the Gothenburg citizens.



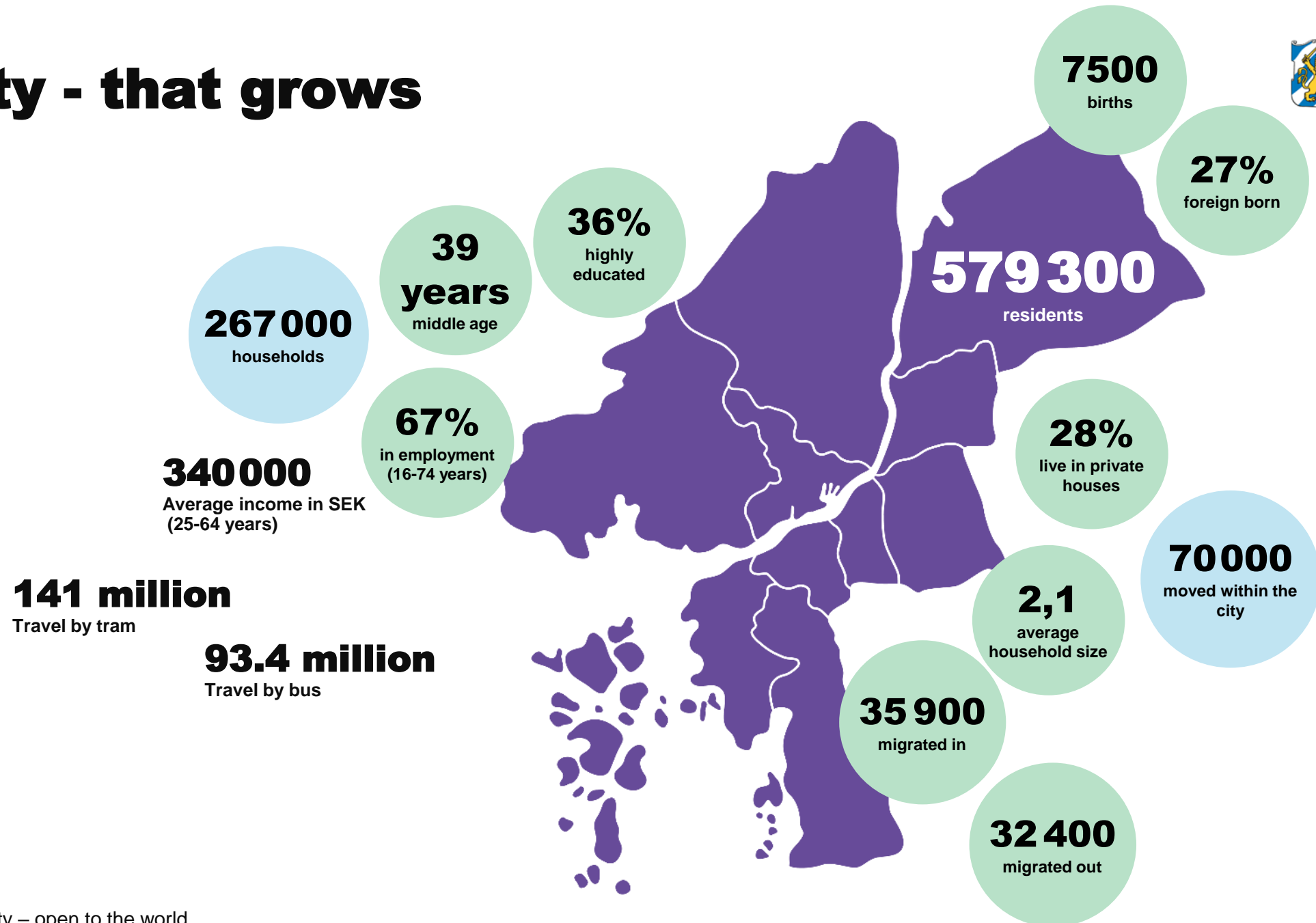
2030
Gothenburg is expected to have **655 500** residents.

2040
728 500 residents

A city - that grows



Göteborgs
Stad



Gothenburg City Government

Quick Facts

25

**technical
departments**

63

**active companies of
which 46 are wholly
owned**

56 100

**employees with more
than 100 different
professions**

Gothenburg City organization

Committees

District boards

Individual and family care, leisure activities, social care for the disabled and the elderly

Leisure

- The Sports and Association Committee
- Park and Nature Committee

Transport

- Road Traffic Committee

Other Committees

- Archives Committee for Region
- Purchasing and Procurement Committee
- Committee for Consumer and Citizen Services
- Committee for Intraservice
- Chief Guardians' Committee
- Committee for Allocation of Social Welfare

Education

- Pre-school Committee
- Compulsory School Committee
- Education Committee
- Labor Market and Adult Education Committee

Culture

- Culture Affairs Committee

Technical provision

- Eco-cycle & Water Committee

Environment

- Environment & Climate Committee

Land & housing

- Planning and Building Committee
- Property Management Committee
- Commercial Premises Committee

Quick Facts

25

**technical
departments**

63

**active companies of
which 46 are wholly
owned**

56 100

**employees with more
than 100 different
professions**

Gothenburg City organization

Göteborgs Stadshus AB

Energy

Göteborg Energi AB

- 11 subsidiaries

Housing

Förvaltnings AB Framtiden

- Bostads AB Poseidon
- Familjebostäder i Göteborg
- Gårdstensbostäder
- Göteborgs Stads bostads AB
- Göteborgs Egnahems AB
- Störningsjouren i Göteborg AB
- Framtiden Byggutveckling AB

Commercial

Premises

Higab AB

- Älvstranden Utveckling AB
- Scandinavium AB
- Förvaltnings AB Göteborgslokaler
- Göteborgs Stads Parkerings AB

Regional companies

- Renova AB
- Gryaab AB
- GREFAB AB

Business

Business Region Göteborg AB

- Lindholmen Science Park
- Johanneberg Science Park
- Sahlgrenska Science Park AB
- Gothenburg Technical College, AB
- ALMI Väst AB

Public transport

Göteborgs Spårvägar AB

- GS Buss AB
- GS Trafikantservice AB

Port

Göteborgs Hamn AB

- Göteborgs Stuveri AB
- Scandinavian Distripoint AB

Tourism, Culture and Events

Göteborg & Co AB

- Got Event AB
- Liseberg AB
- Göteborgs Stadsteater AB

Internal companies

- Försäkrings AB Göta Lejon
- Göteborgs Stads Leasing AB

Other

- Boplats Göteborg AB

Quick Facts

25

**technical
departments**

63

**active companies of
which 46 are wholly
owned**

56 100

**employees with more
than 100 different
professions**

Quick Facts

34

SEK billion in sales

90%

**of the budget is
health care,
education and care**

861

Politicians

An aerial, dark-toned image of a city at night, heavily overlaid with digital data visualizations. Glowing blue and white lines, dots, and semi-transparent rectangular panels suggest a complex network of data flow and connectivity across the urban landscape. The text 'DATA — A STRATEGIC RESOURCE IN A SMART CITY' is centered in a clean, white, sans-serif font. In the bottom left corner, the City of Gothenburg logo is visible.

DATA — A STRATEGIC RESOURCE IN A SMART CITY

ECOLOGICALLY SUSTAINABLE

City
development
Environment

Culture and
leisure

Business and
labour

ECONOMICALLY SUSTAINABLE

Gothenburg

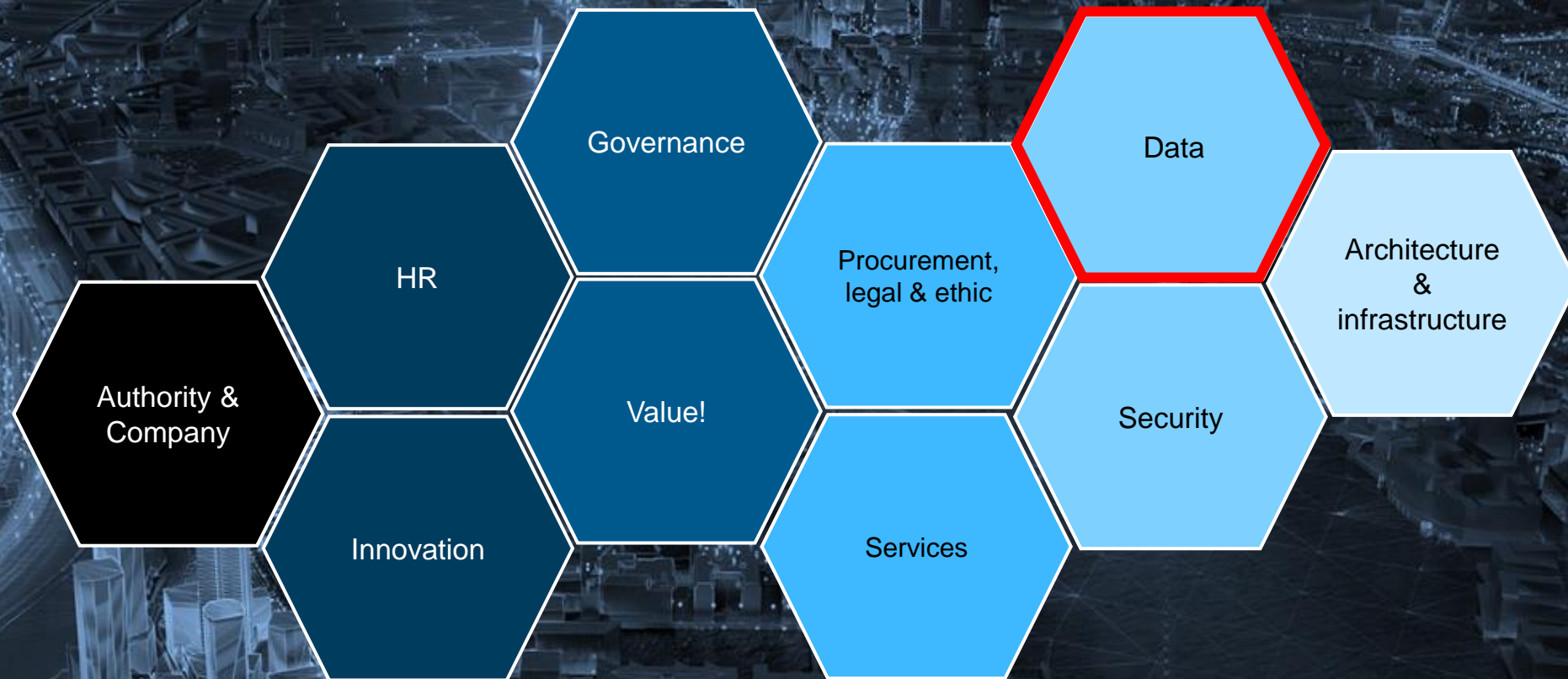
Sustainable city –
open to the world

Health and
safety

Democracy and
engagement

Education

SOCIALLY SUSTAINABLE



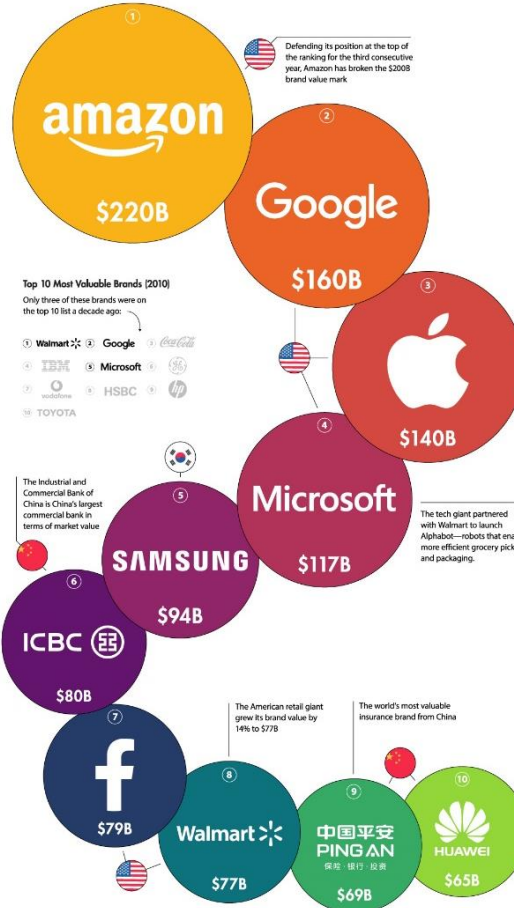
← Together! →

A wide-angle photograph of a lush green field, possibly a meadow or a field of tall grass, stretching towards a distant horizon. The sky is filled with soft, white clouds, and a line of trees is visible on the horizon. The overall tone is peaceful and natural.

**DATA IS NOT THE NEW OIL,
IT'S THE NEW SOIL**

The report covers the world's 500 most valuable brands, across all sectors and countries.
Here are the 10 brands dominating the ranking:

The 10 Most Valuable Brands 2020



Although tech companies reign supreme, brands from more traditional industries are furiously rising up the ranks, while others risk falling off entirely.

Brand Value Change 2019-2020 (%)

DATA IN A SMART CITY

LIFE CYCLE MANAGEMENT



COLLECT & CONTROL



[Aktuellt](#)

[Projekt](#)

[Finansiering](#)

[Resultat](#)

[Om oss](#)

Luft och vatten med IoT

gothenburg

[TARGET INDUSTRIES](#)

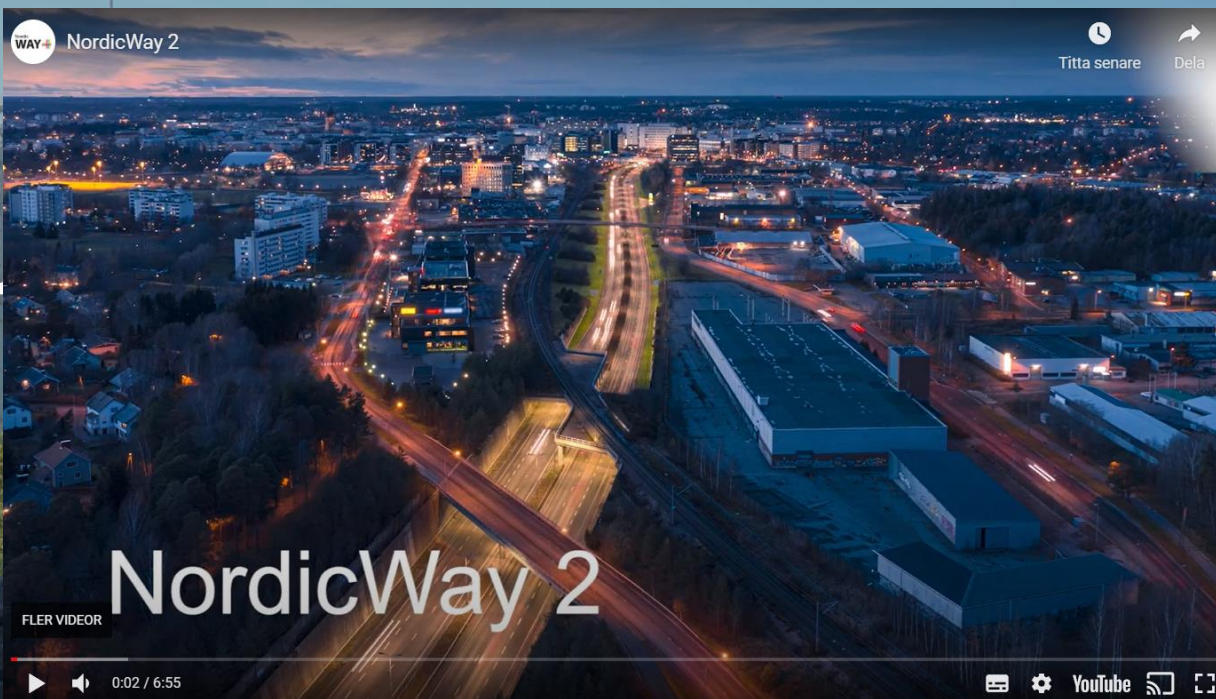
[DOING BUSINESS](#)

[WHY GOTHENBURG](#)

[HOW WE CAN HELP](#)

[MEDIA](#)

[MORE...](#)





DATA IN A SMART CITY

LIFE CYCLE MANAGEMENT



ANALYZE



COLLECT & CONTROL



AI
S W E D E N

AI Sweden - accelerating applied AI

DATA IN A SMART CITY

LIFE CYCLE MANAGEMENT



ANALYZE



SHARE



COLLECT & CONTROL



AUTOMATE



Ortofoto 2015

Ett ortofoto är en flygfotomosaik. Detta ortofoto täcker Göteborg. Ortofotot används primärt som



Adresser St

Detaljerad o
Stad. Datam



Adresser W

Detaljerad o
Stad. Datam



Göteborgs

Nu har vi hel
Hammarkulle



Fotgängarn

Fotgängare
ett större om
av gång näte



Modellberäk

Modellberäk
Naturvårdsv
Dygnsmedel



Parkerings

Visar parkeri
Parkeringsal
Samfällighet
om sina park
pendelparke
de platser sc



Grundvatte

OBS Denna
använder de
data. Kontak
levererar mä
Göteborg.



Pumpstatio

Visar kommu
man kan pur



DATAFÖRENINGEN VÄSTRA



Göteborgs Stad, en av Sveriges bästa kommuner på öppna data

Fördelarna med öppna data har bidragit till ett ökande intresse, både nationellt och internationellt. Men enligt internationella mätningar har Sverige halkat efter när det kommer till att tillgängliggöra öppna data. Det vill vi i Västra kretsen vara med och förändra.

Under det andra mötet 5/5 klockan 16:00-17:30 gästas vi av utvecklingsledare Digital Service Kim Lantto på Göteborgs Stad. Kim kommer gå igenom lite kort om vad öppna data är, varför Göteborgs Stad startade med Öppna data och hur långt man nu kommit inom många områden.

Välkommen!

Anmäl mig

ds-karta och som bas för andra
t ex Stads-karta WMS eller

och gällande adresser i Göteborgs
positionering.

e på stadens höjdmodell från 2017

ngsskuggning och terränglutning
sning 0.5 meter per pixel.

höjdmodell från 2017 med

spektive månad. Informationen om
id eller förvaltning som fakturan är
sationsnummer, fakturanummer,
nto som fakturan är bokförd på,
(er), konterat belopp exklusive
x Excel finns nu en CSV-fil att
kommer innehålla respektive
till vår E-tjänst:
5123948522

m trafikkontorets system har
illstånd.

telstall för Göteborgs

DATA IN A SMART CITY

LIFE CYCLE MANAGEMENT



ANALYZE



SHARE



COLLECT & CONTROL



AUTOMATE



UNDERSTAND & EXPERIENCE

700 km² digital twin



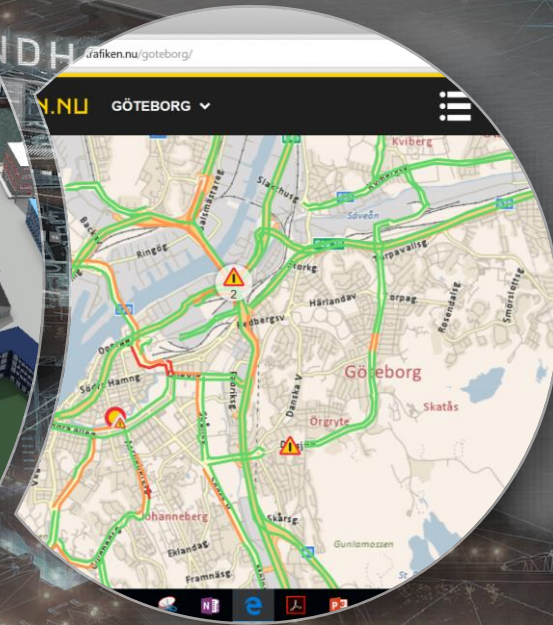
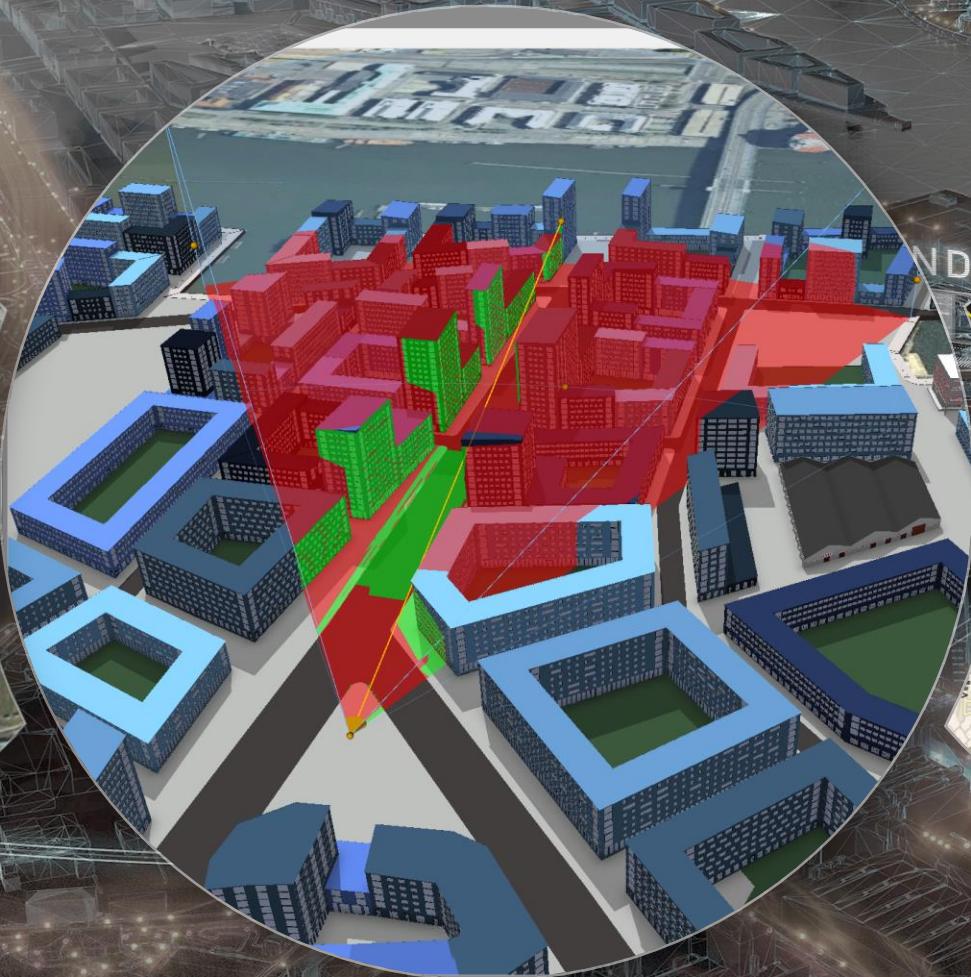
Time dimensions in a digital twin

Simulated
Predict

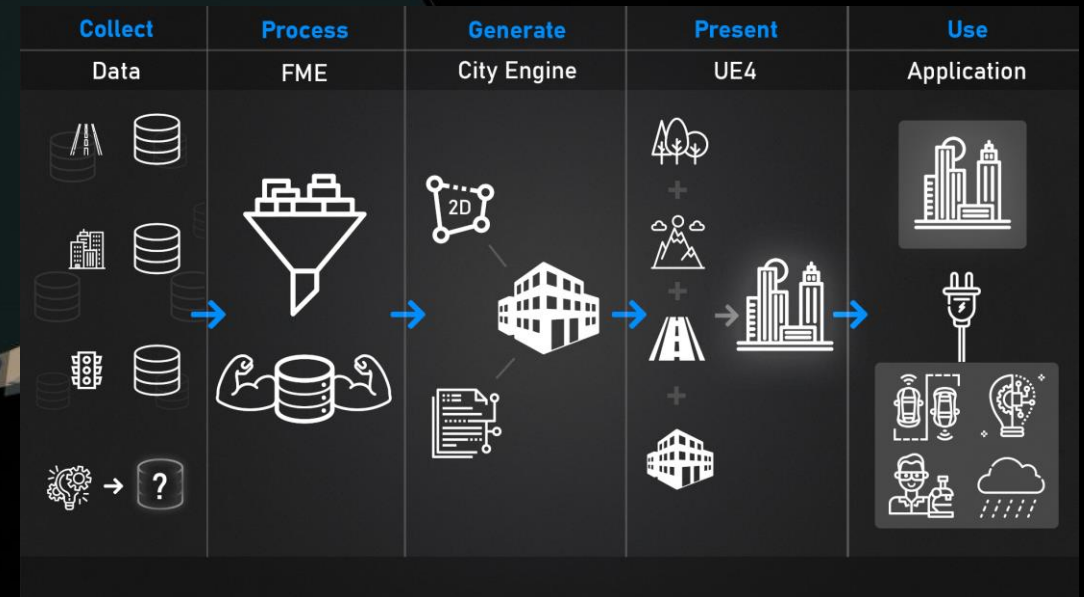
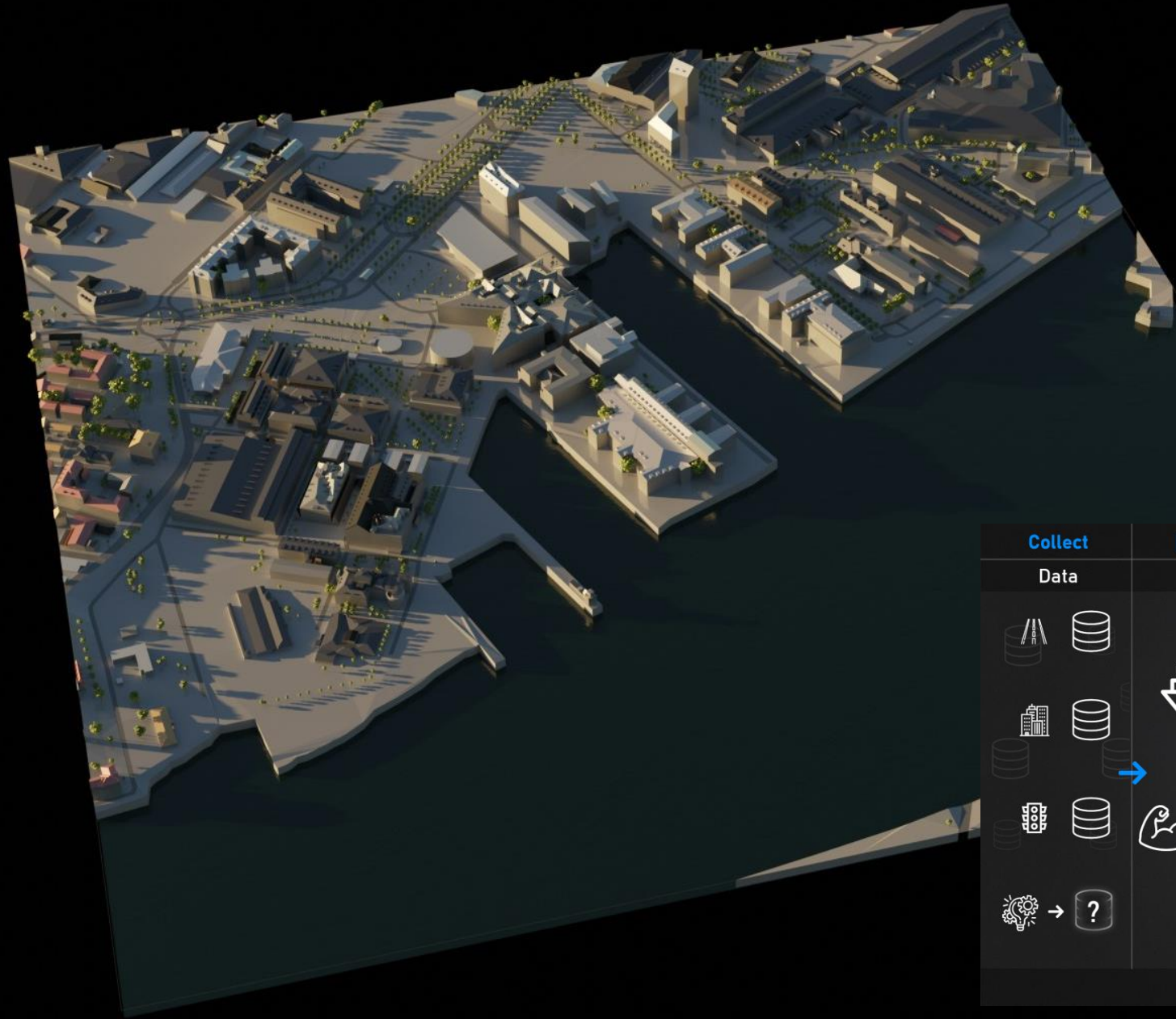
Present
Understand

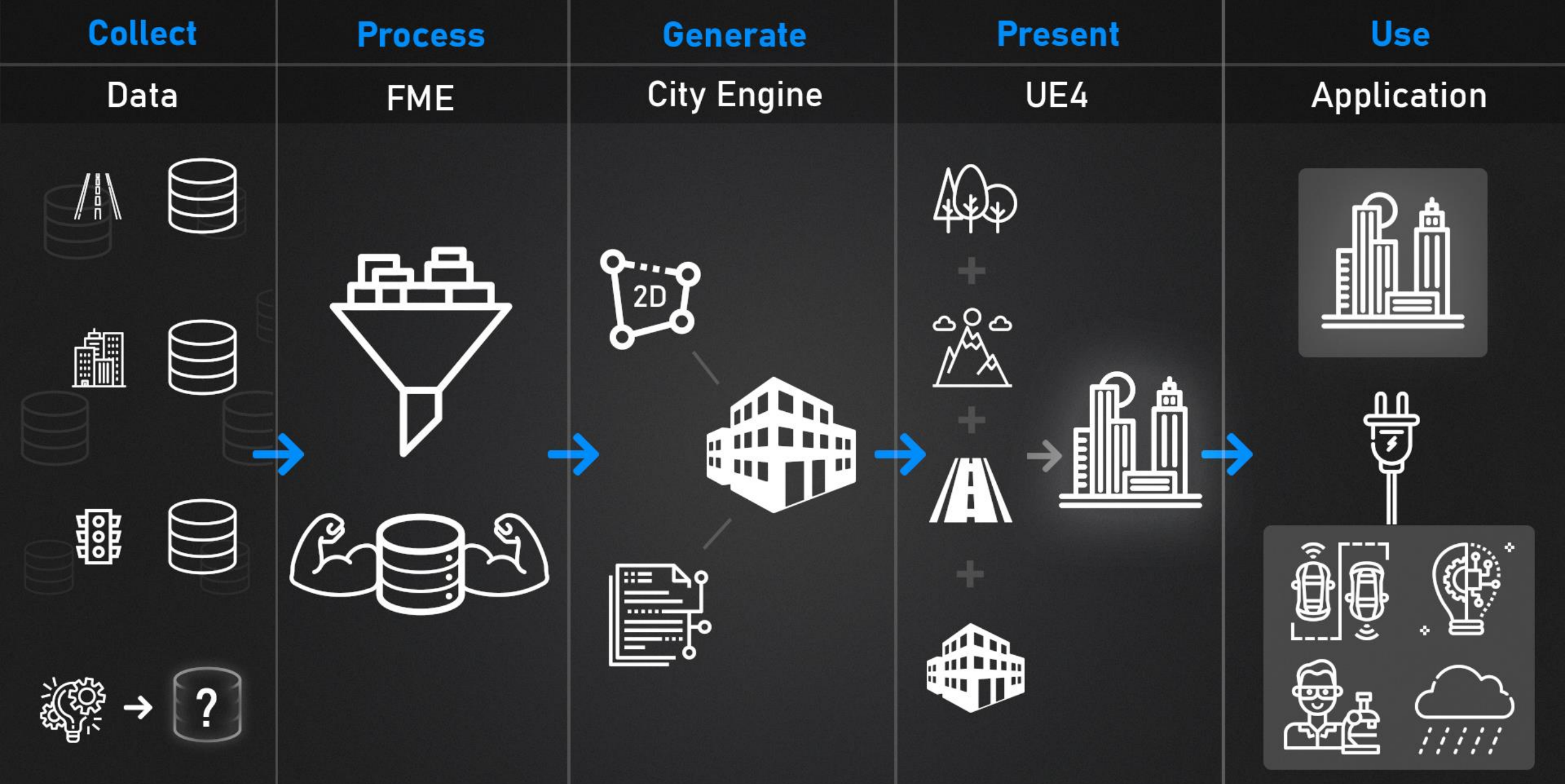
Real time
Control

Timeless
Experience



Alpha 1





Fully automated process from geo data to a digital twin







THANK YOU!



Dan Folkesson

CDO | Digital strategist | Value creator

Sweden · [500+ connections](#) · [Contact info](#)

[✉: dan.folkesson@intraservice.goteborg.se](mailto:dan.folkesson@intraservice.goteborg.se)

[☎: +46 73 910 26 85](tel:+46739102685)



Göteborgs Stad